

MasterLine

Doors



Reynaers
Aluminium

Windows.
Doors.
Façades.

Together for better

www.reynaers.com

Door solutions for any occasion

Choosing MasterLine means embracing optimal performance in every detail. Our flagship door system offers you high thermal levels, certified sustainable design, and life-long comfort in one easy-to-operate solution.

With the help of our complete range of design options and variants, you can make doors your own and create a clean, aesthetic look. From hidden hardware features to eye-catching opening types: the choice is yours.

Based on years of research and expertise, MasterLine is the safest and most durable door system within our range. The sturdy aluminium solution can even reach Passive House energy levels, which makes it ideal for your sustainable renovation projects or new-builds.



Flagship product with strong pedigree.

MasterLine is the most trusted door solution among Reynaers Aluminium professionals worldwide. It has been built upon for years to offer optimal performance levels and futureproof design today. The quality-for-money solution has been tested and approved for one million cycles, includes the latest technology for a wide field of application, and enables worry-free installation without exception.



Clean look.

If you are looking for a clean finishing touch, then MasterLine is your perfect match. Choose from hidden hardware options - such as integrated smart access technology or motorised locks -, multiple threshold variants and various profile designs to create the look you want. Whatever your needs may be, the no-nonsense door system integrates smoothly into the façade to complement your specific project.

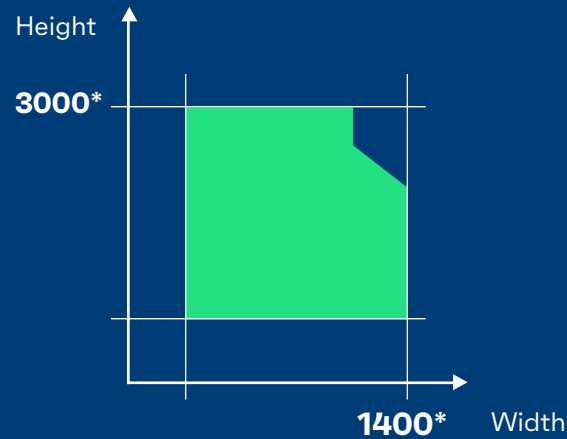


Ultimate combination of performance and aesthetics.

No need to compromise on performance or design. You can personalise these versatile doors as much as you like, thanks to a wide range of handle and colour options, opening types, hardware features, and more. MasterLine also includes various safety options, including burglar resistance, fireproof performance, and anti-panic solutions. Its multiple insulation variants help you meet all energy efficiency requirements.

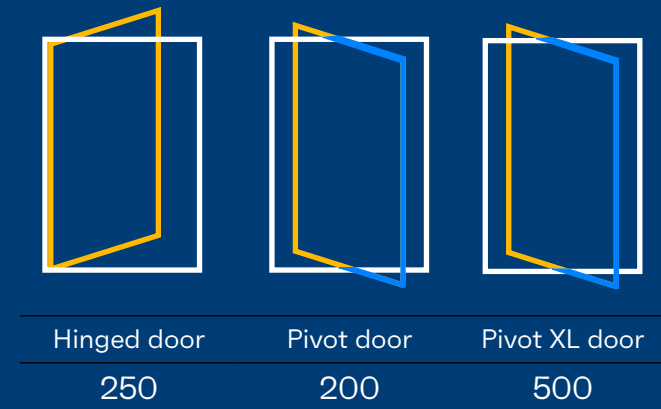
MasterLine Doors General

Possible vent sizes (mm)



*Max dimensions depend on multiple parameters including wind load requirements and glass type choice.

Possible vent weights (kg)



Visible dimensions (mm)

Inward opening door

1	Min. frame width	42.5
2	Min. vent width	104.5
3	Frame depth	77
4	Vent depth	77
5	Glass thickness	Up to 62

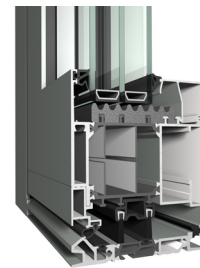


MasterLine Doors Variants

MasterLine Flush Door

Available in MasterLine 8 and 10

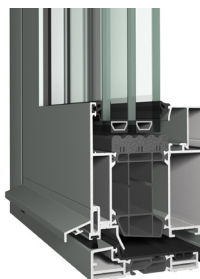
Thermal value - Uf (W/m²K)	Down to 0.89
Water tightness	9A (600 Pa)
Wind load resistance	C3 (1200 Pa)
Burglarproof	RC 3 / PAS 24



MasterLine Terrace Door

Available in MasterLine 8 and 10

Thermal value - Uf (W/m²K)	Down to 0.87
Water tightness	9A (600 Pa)
Wind load resistance	C3 (1200 Pa)
Burglarproof	-



**Performances and properties depend on size, profile combinations, hardware and infill

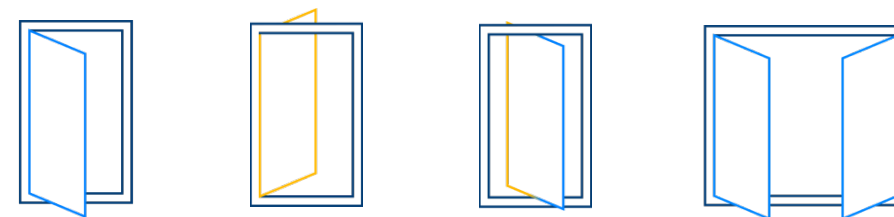
MasterLine Pivot Door

Available in MasterLine 8

Thermal value - Uf (W/m²K)	Down to 1.5
Water tightness	4A (150 Pa)
Wind load resistance	C3 (1200 Pa)
Burglarproof	RC 2 (EN 1627)



More variants can be found on our website...

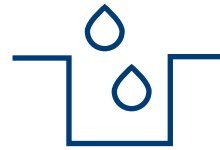


MasterLine Doors Options



Access Control

When it comes to protecting your home or business, you want to have control over who has access to your building, and when. We offer a number of electronic access control systems to protect your residence or business facility.



Gutter

During heavy rain your door might have to process large quantities of water. An integrated gutter can help to guide this flow away from the door, even combined with tiled terrace floors. In most cases we offer aesthetically covered gutter solutions.



Zero threshold

Creating inviting entryways and exits without boundaries has never been easier. This elegantly hidden threshold solution is the ideal match for your wheelchair-friendly building project, even with continuous flooring.



Concealed hinges

The difference often lies in the smallest of details. That is why subtly concealed hinges are the ultimate finishing touch for your windows and doors. With the hardware hidden from sight, you get a clean look both when the system is opened or closed.



Sustainability

MasterLine doors are known for their high thermal performance, helping people meet the latest energy efficiency requirements. For example, the MasterLine 8 Panel Door is Passive House certified, reaching Ud levels down to 0.8 W/m²K. Aluminium is always a responsible choice, as it can be 100% recycled without loss of quality. Recently, MasterLine 8's innovative design, with low-carbon insulatory materials, has led to its Cradle to Cradle® certification.



Smart Buildings

Our door systems are compatible with the industry's leading smart building systems. Thanks to a range of intelligent solutions, our systems do the work for you at the push of a button. No need to worry about keys anymore: the smart system allows you to manage access to your home or building through a fingerprint scanner or mobile app. Optional integrated ventilation vents help you create a healthy indoor environment.

Get in touch

Interested or looking for more in-depth technical information? Contact your Reynaers Aluminium representative for more information or scan the QR code to visit our website.

