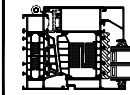


MASTERLINE 10-HI+ FUNCTIONAL DOORS INWARD

OPDEKDEUR
FENÊTRE PORTE
REBATED DOOR
FENSTERTUER

10..

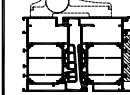
MASTERLINE 10-HI+ GETEKEND
MASTERLINE 10-HI+ DESSINE
MASTERLINE 10-HI+ DRAWN
MASTERLINE 10-HI+ GEZEICHENET



VLAKKE DEUR
PORTE PLANE
FLUSH DOOR
FLACHE TÜR

12..

MASTERLINE 8-HI GETEKEND
MASTERLINE 8-HI DESSINE
MASTERLINE 8-HI DRAWN
MASTERLINE 8-HI GEZEICHENET



OVERZICHT OPENINGS TYPES
APERÇU TYPES D'OUVERTURE
OVERVIEW OPENING TYPES
ÜBERSICHT ÖFFNUNGSARTEN

<p>DEUR BUITENDRAAIEND PORTE OUVRANT VERS L'EXTERIEUR DOOR OUTWARD OPENING TÜR NACH AUSSEN ÖFFNEND</p> <p>101a 121a</p>	<p>BALKONDEUR BUITENDRAAIEND PORTE-FENÊTRE PMR OUVRANT VERS L'EXTERIEUR BALCONY DOOR SINGLE OUTWARD OPENING BALKONTÜR NACH AUSSEN ÖFFNEND</p> <p>101b</p>	<p>DUBBELE DEUR NAAR BUITENDRAAIEND PORTE DOUBLE OUVRANT VERS L'EXTERIEUR DOUBLE DOOR OUTWARD OPENING ZWEIFLUEGELIGE TÜR NACH AUSSEN ÖFFNEND</p> <p>102a</p>	<p>DUBBELE DEUR ZT NAAR BUITENDRAAIEND PORTE DOUBLE ZT OUVRANT VERS L'EXTERIEUR DOUBLE DOOR ZT OUTWARD OPENING ZWEIFLUEGELIGE TÜR ZT NACH AUSSEN ÖFFNEND</p> <p>122a</p>	<p>DUBBELE BALKONDEUR BUITENDRAAIEND PORTE-FENÊTRE PMR DOUBLE OUVRANT VERS L'EXTERIEUR DOUBLE BALCONY DOOR SINGLE OUTWARD OPENING DOPPEL BALKONTÜR NACH AUSSEN ÖFFNEND</p> <p>102b</p>	<p>SAMENGESTELDE BALKONDEUR NAAR BUITENDRAAIEND PORTE-FENÊTRE PMR COMPOSEE OUVRANT VERS L'EXTERIEUR COMBINED BALCONY DOOR OUTWARD OPENING KOMBINIERTE BALKONTÜR NACH AUSSEN ÖFFNEND</p> <p>103a</p>	<p>SAMENGESTELDE DEUR BUITENDRAAIEND PORTE COMPOSEE OUVRANT VERS L'EXTERIEUR COMBINED DOOR OUTWARD OPENING KOMBINIERTE TÜR NACH AUSSEN ÖFFNEND</p> <p>123a</p>
---	---	--	--	--	---	--

PROFIELOVERZICHT
APERÇU DES PROFILES
PROFILE OVERVIEW
PROFILÜBERSICHT



HULPPROFIELEN
PROFILES DE RACCORDEMENT
ADDITIONAL PROFILES
ZUSATZPROFILE

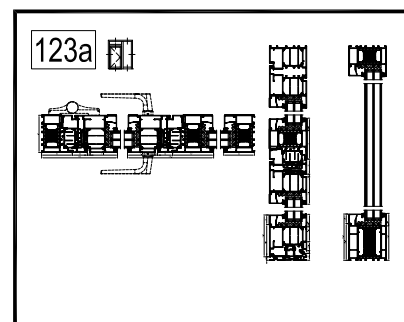
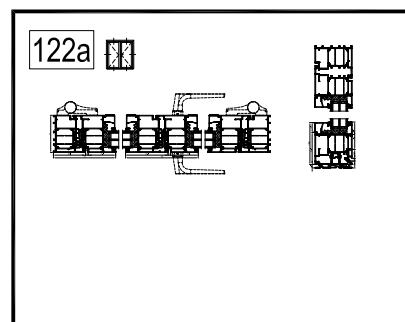
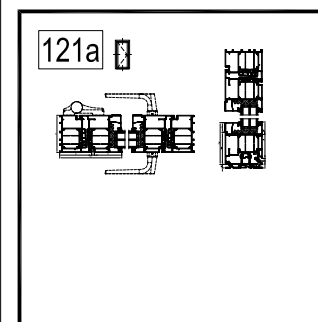
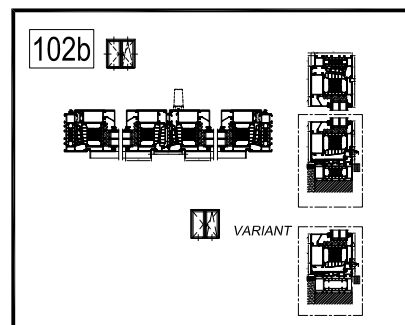
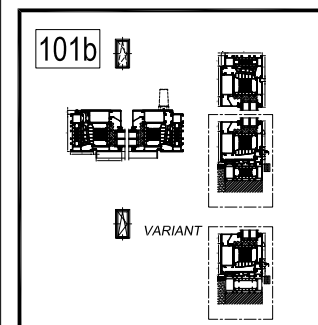
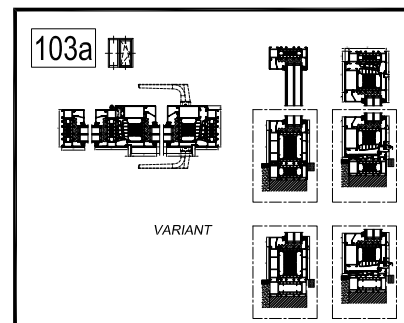
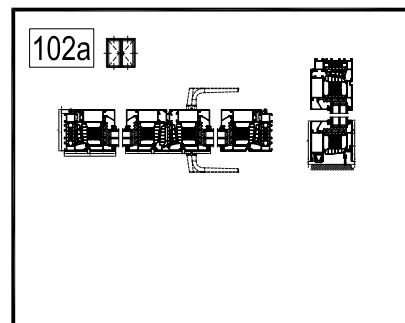
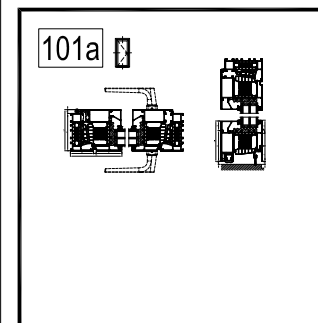


Masterline 10 Door_Additional profiles.dwg

BOUWAANSLUITINGEN
RACCORDEMENTS AU BATIMENT
BUILDING CONNECTIONS
BAUANSCHLUESSE

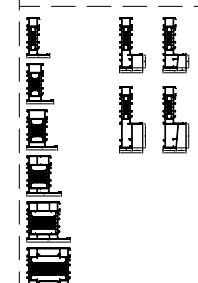


... .dwg

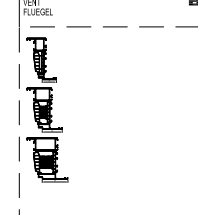


PROFIELOVERZICHT
APERÇU DES PROFILES
PROFILE OVERVIEW
PROFILÜBERSICHT

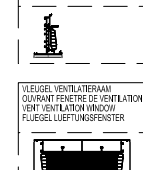
BUITENKADER
DORMANT
OUTER FRAME
BLENDKRAMEN



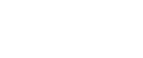
VLEUGEL
OUVRANT
VENT
FLÜGEL



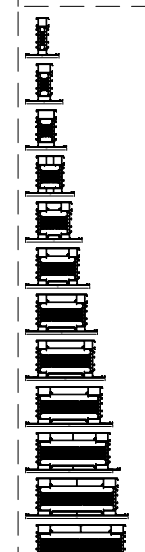
STOLPPROFIEL
BATTÉE CENTRALE FEN. DOUBLE OUVR.
DOUBLE CASHEMENT PROFILE
STÜLP-PROFIL



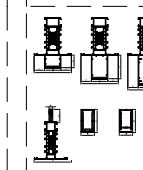
VLEUGEL VENTILATION
OUVRANT FENÊTRE DE VENTILATION
VENT VENTILATION WINDOW
FLÜGEL LÜFTUNGSPENSTER



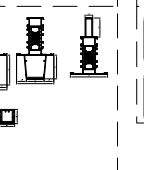
T-PROFIEL
TRAVERSE
TRANSICHAULLON
SPROSSE



VERSTERKINGSPROFIEL
PROFILE DE RENFORCEMENT
REINFORCEMENT PROFILE
VERSTÄRKUNGSPROFIL



Z-PROFIEL
PROFIL Z
Z-PROFIL



DE PROFIELKEUZE WORDT BEPAALD DOOR DE MAXIMALE AFMETINGEN EN HET MAXIMALE GEWICHT VAN HET ELEMENT. NEM CONTACT OP MET UW REYNAERS ALUMINIUM FABRIKANT OM DE JUISTE PROFIELKEUZE TE BEVESTIGEN.
LE CHOIX DU PROFILÉ EST DÉFINI PAR LES DIMENSIONS MAXIMALES ET LE POIDS MAXIMUM DE L'ÉLÉMENT. VEUILLEZ CONTACTER VOTRE FABRICANT REYNAERS ALUMINIUM POUR CONFIRMER LE BON CHOIX DE PROFILÉ.
THE PROFILE SELECTION IS DEFINED BY THE MAXIMUM DIMENSIONS AND WEIGHT OF THE ELEMENT. PLEASE CONTACT YOUR REYNAERS ALUMINIUM FABRICATOR TO CONFIRM THE RIGHT PROFILE SELECTION.
DIE PROFILAUSWAHL WIRD DURCH DIE MAXIMALEN ABMESSUNGEN UND DAS GEWICHT DES ELEMENTS DEFINIERT. BITTE WENDEN SIE SICH AN IHREN REYNAERS ALUMINIUM HERSTELLER UM DEN RICHTIGEN PROFILAUSWAHL ZU BESTÄTIGEN.